

MT2000 Quick Start Guide and Menu Tree

(version 0.0.42 / package 0.0.17)

BASIC OPERATION:

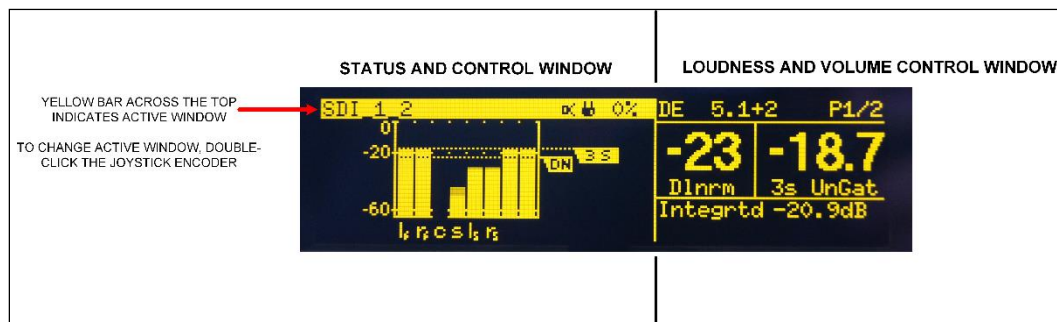
The front panel joystick/encoder can be turned (rotated), pressed in, as well as pushed up, down, left, right.

To power on/off the unit, press and hold the joystick in

The display is divided into two halves.

- Status/Control window on the left. All statuses, audio meters, and menus are displayed and adjusted.
- Loudness/Volume Control window on the right. Loudness measurements and envelope information about the audio source are displayed. The speaker/headphone volume control is functional in this window as well.

To change between the two windows, press the joystick/encoder in 2x quickly (double-click)



STATUS/CONTROL WINDOW:

To navigate through menus and displays, press the joystick/encoder:

UP or **DOWN** to move through a menu structure "vertically"

RIGHT to:

- move to the next menu option to the right.
- Accept the change in a parameter value (change from current value is indicated by a * character to the left of the parameter name)

THE TELOS ALLIANCE™

108 Foxshire Drive | Lancaster, PA 17601 USA | T: +1.717.735.3611 | F: +1.717.735.3612 | TelosAlliance.com

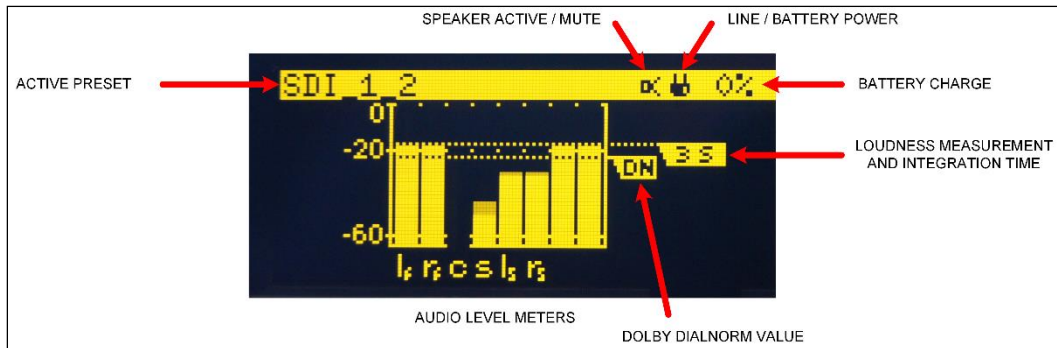
MT2000 Quick Start Guide (v0.0.42)

LEFT to “escape”/back out of submenus, or to circle left at the top menu.

- ① If you are ever feeling lost in the menus and want to get back to the top level menus, press the joystick to the left repeatedly

The Presets, Out/Meter Setup, and System menus and sub-menus are where all the parameters and inputs are adjusted.

To adjust a parameter, turn the encoder to the value you want and then press it to the right to select (enter) the value

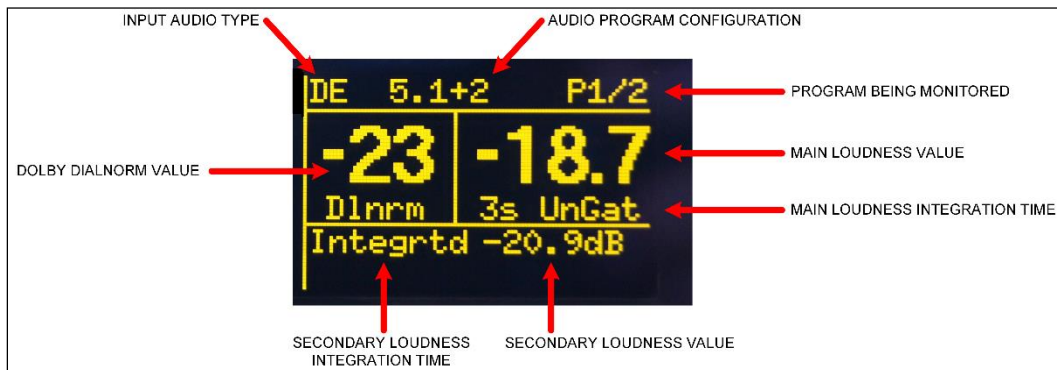


LOUDNESS/VOLUME CONTROL WINDOW:

Press the joystick/encoder:

- UP to reset the loudness measurements
- DOWN to mute or unmute the speaker/headphone outputs
- LEFT to solo the left channel of an audio pair
- RIGHT to solo the right channel of an audio pair

Rotate the encoder to adjust the listening volume



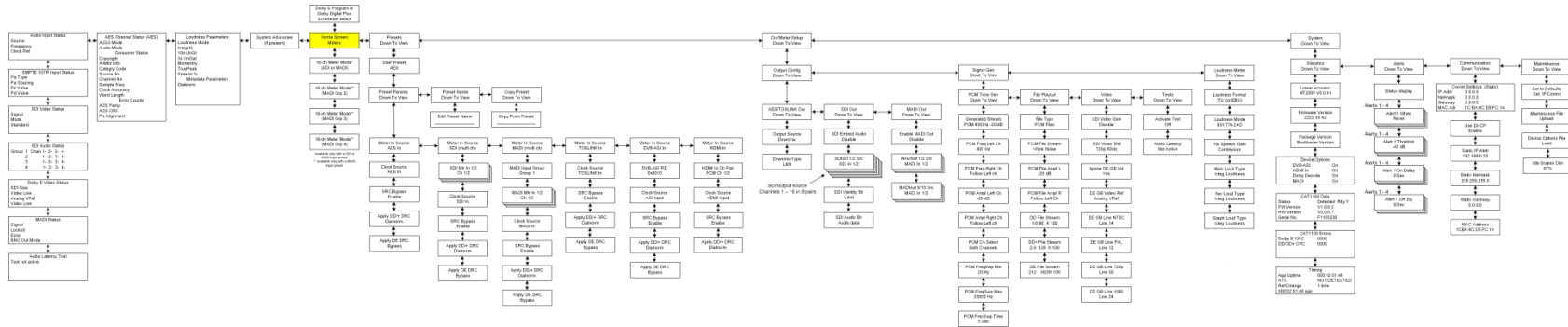
THE TELOS ALLIANCE™

108 Foxshire Drive | Lancaster, PA 17601 USA | T: +1.717.735.3611 | F: +1.717.735.3612 | TelosAlliance.com

MT2000 Quick Start Guide (v0.0.42)

Entire MT2000 Menu Tree

MT2000 Menu Tree
January, 2016
(Version 0.0.42 and higher)



Top Level Menu

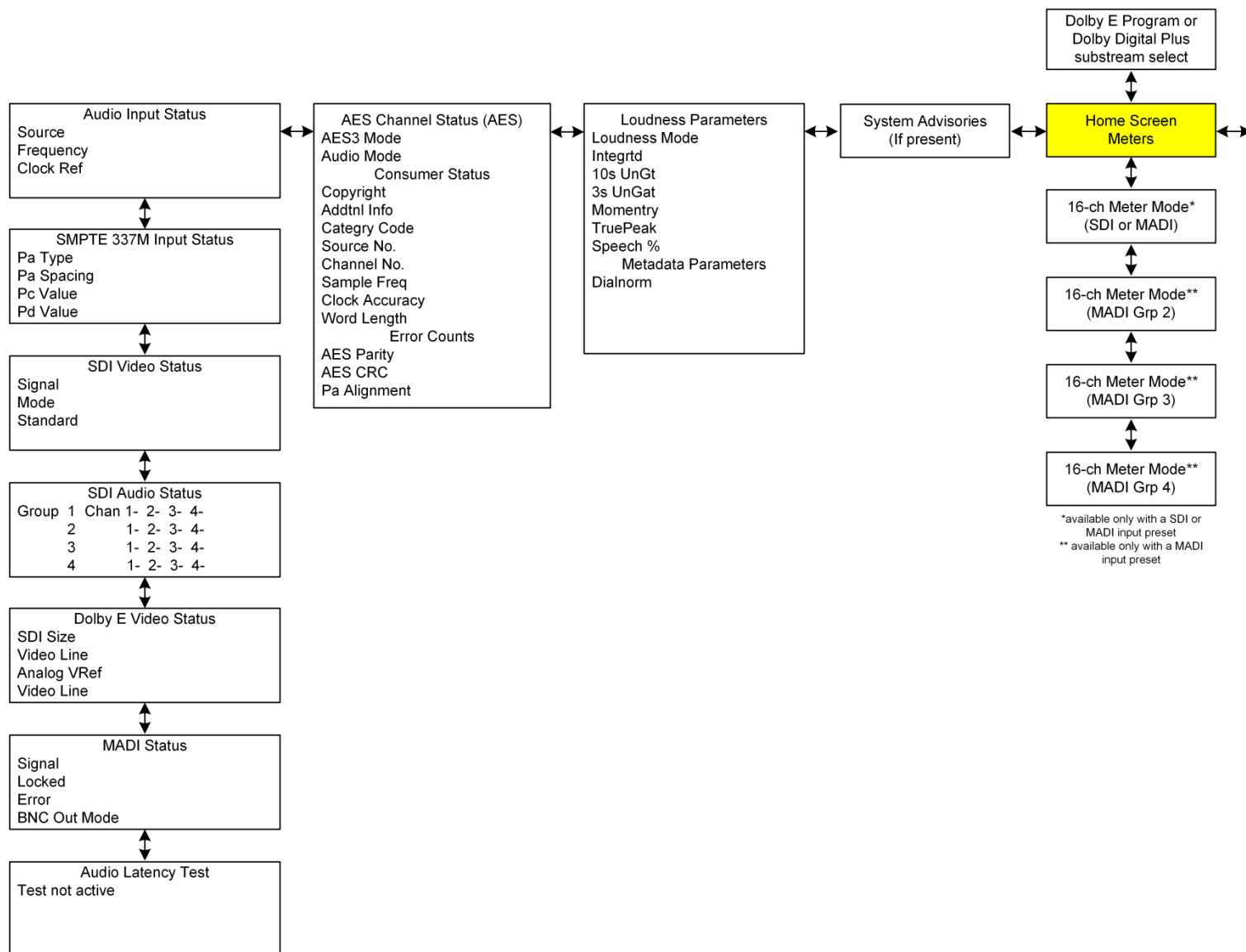


THE TELOS ALLIANCE™

108 Foxshire Drive | Lancaster, PA 17601 USA | T: +1.717.735.3611 | F: +1.717.735.3612 | TelosAlliance.com

MT2000 Quick Start Guide (v0.0.42)

Input Status and Home Menu Tree

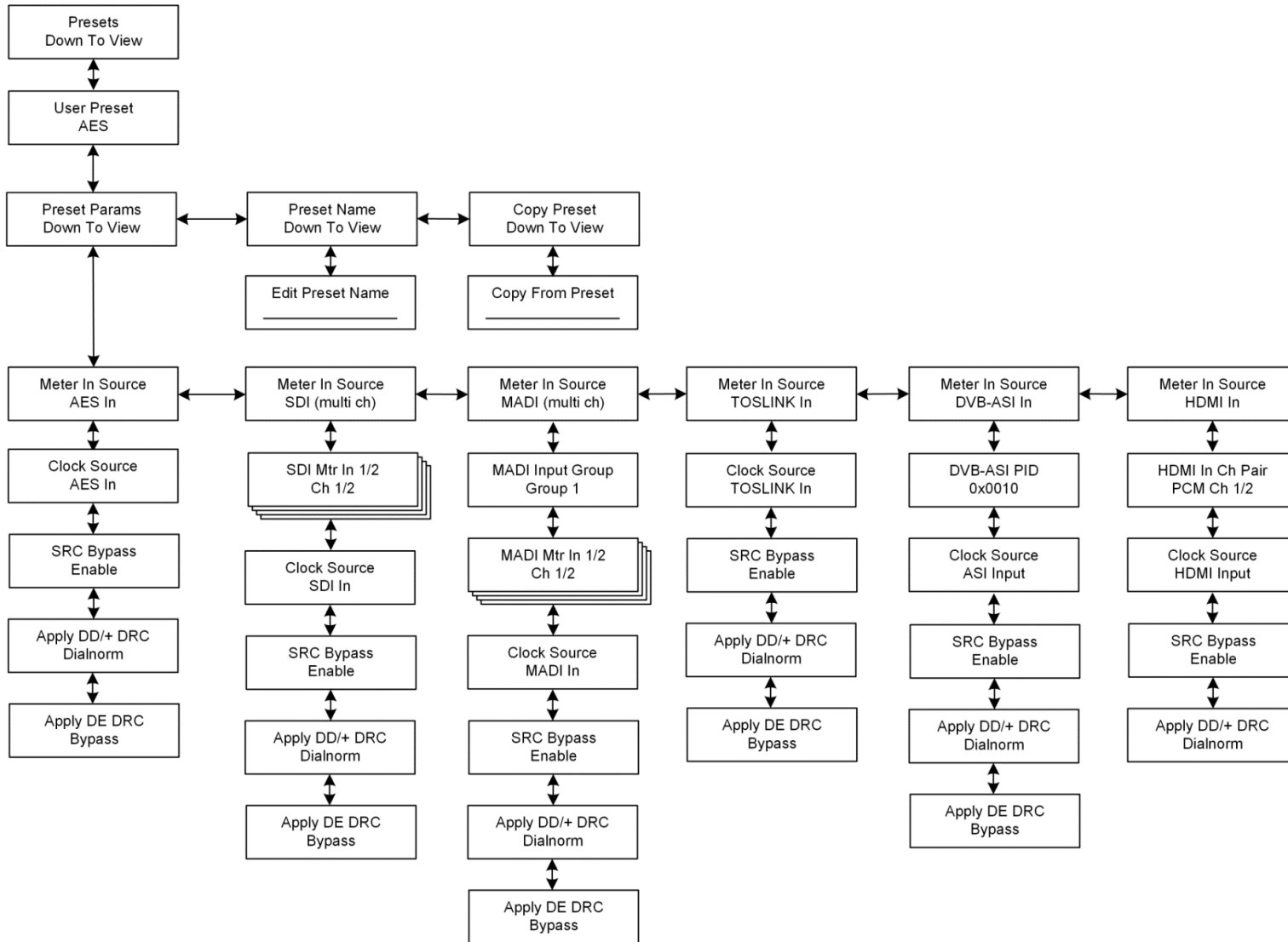


THE TELOS ALLIANCE™

108 Foxshire Drive | Lancaster, PA 17601 USA | T: +1.717.735.3611 | F: +1.717.735.3612 | TelosAlliance.com

MT2000 Quick Start Guide (v0.0.42)

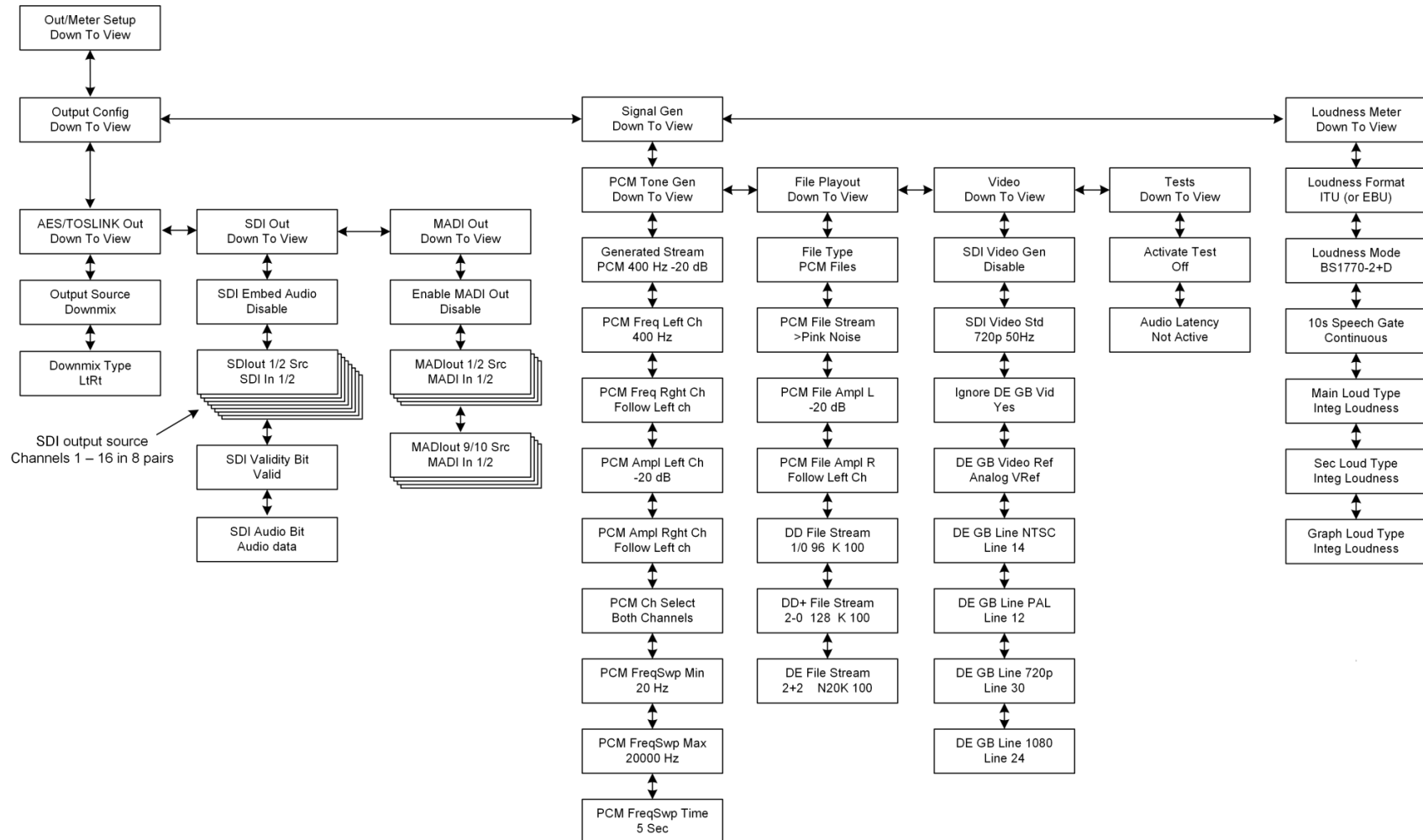
Presets Sub Menu



THE TELOS ALLIANCE™

MT2000 Quick Start Guide (v0.0.42)

Output, Signal Generator, and Loudness Meter Sub Menu

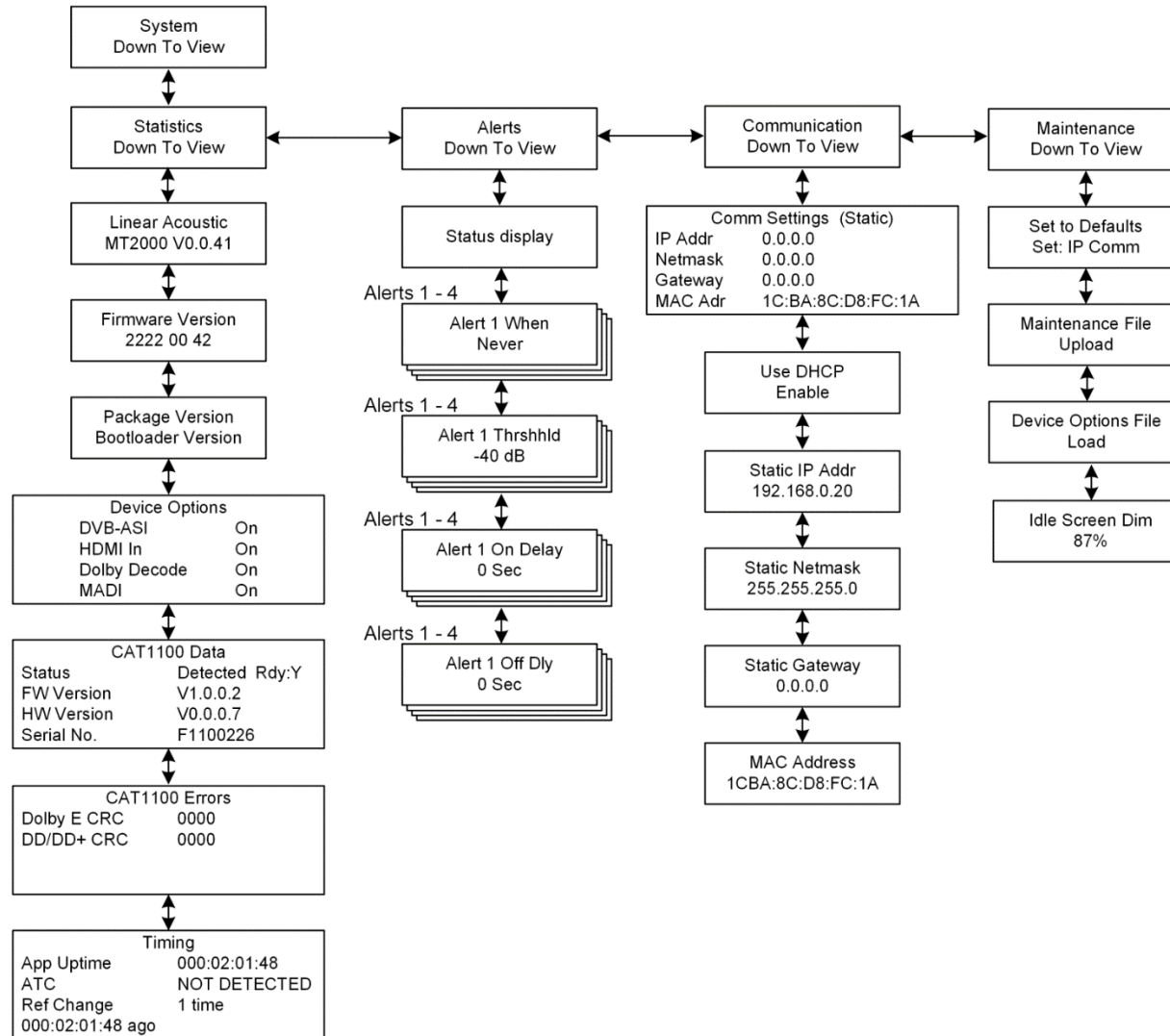


THE TELOS ALLIANCE™

108 Foxshire Drive | Lancaster, PA 17601 USA | T: +1.717.735.3611 | F: +1.717.735.3612 | TelosAlliance.com

MT2000 Quick Start Guide (v0.0.42)

System Sub Menu



THE TELOS ALLIANCE™