

# Axia® Quasar Engine RPS /Quasar Engine RPS Upgrade Kit

**This Quickstart Guide assumes a few things:**

- You just purchased a 2011-00835-000 Upgrade Kit to convert your existing Quasar Engine into a Quasar Engine RPS.
- You just purchased a 2001-00581-000 Quasar Engine RPS , based on the Quasar Engine product
- Familiarity with the Quasar Engine, XR and SR products
- Familiarity with Audio over IP and Axia Livewire products
- Basic networking skills and a familiarity with networking terminology



## ITEMS REQUIRED FOR INSTALLATION:

The following items are necessary to complete the installation of this unit:

- An approved network switch properly configured for use on a Livewire+ network
- Phillips Screwdriver
- A valid Quasar Soft License (p/n 3002-00107-000), in case you purchased an Upgrade Kit only, or limited functionality can be achieved with PathFinder Core Pro.

## ...Upgrading or Installing?

- 1) If you purchased a 2011-00835-000 Upgrade Kit, please read the next pages to upgrade your existing Quasar Engine into a Quasar Engine RPS.
- 2) If instead, you purchased a 2001-00581-000 Quasar Engine RPS platform, then you can skip the next pages and proceed to Chapter: [Unpacking the Axia Quasar Engine RPS](#).

# Unpacking and Installing the Quasar Engine RPS Upgrade Kit

---

## Unpacking the Upgrade Kit:

The Quasar Engine RPS Upgrade kit consists in a PCI-Express card to be installed in the PCI Riser slot of your Quasar Engine.

## The box includes:

- A welcome card with a QR code to download this Quick Start Guide
- 1x Quasar Engine RPS Card with bracket (p/n: 1792-00199)

## Important Information:

### Internal Cabling:

This Card requires no cabling or wiring to be connected internally, once installed.

### Default IP Address:

This is 192-168.2.10/255.255.255.0



### Software:

The RPS Upgrade Card comes preprogrammed with the latest Quasar Surface Software. Additional software updates can be downloaded from the Telos Alliance website, and can be uploaded via the Card's web UI. The RPS Upgrade Card requires your Quasar Engine to run SW v3.0 or greater, in order to operate.

## Installing the Upgrade Kit:

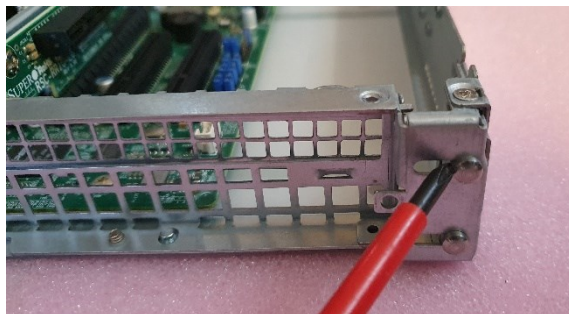
1. Remove your Quasar Engine platform from the rack, and position it on a table
2. Remove the screws as shown in the pictures below, in order to remove the engine's top cover plate



3. Pull the top cover plate from the knob screw, and lift the top cover in order to remove it.

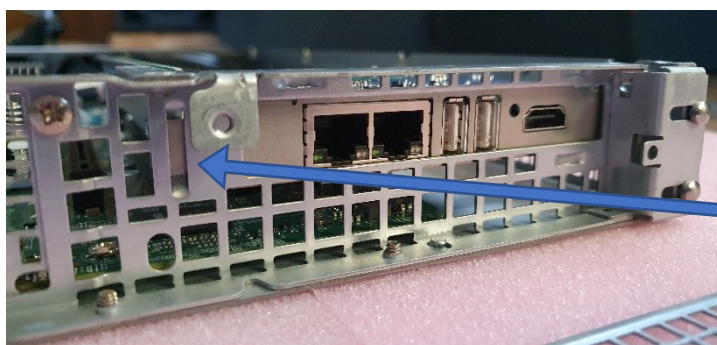
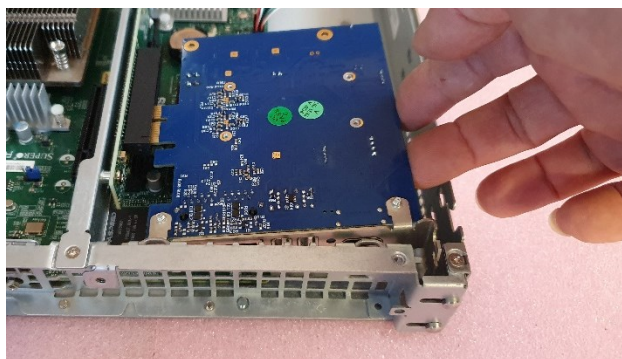


4. Remove the screw as shown in the picture below, and slide the locking tab to the right, in order to remove the PCI Slot blanking plate.



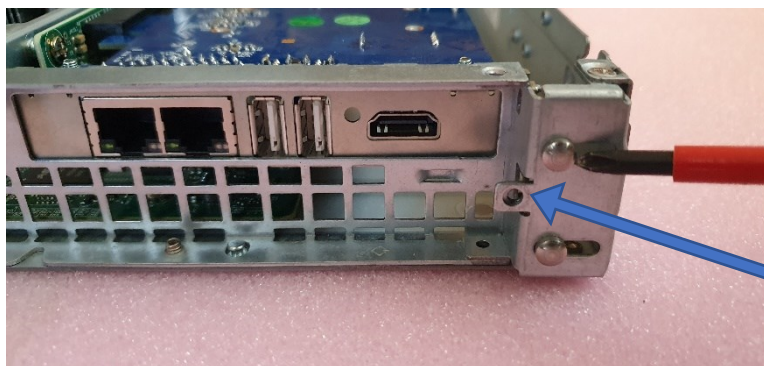


5. Remove the blanking plate by sliding it to the right.
6. Insert the card in the PCI Riser board's connector.



*The tip of the card's bracket slides in this slot*

7. Slide the locking tab to the left, making sure the RPS Board is secured in place



*Apply the screw here*

8. Apply the screw to fix the locking tab, as shown in the picture above.
9. Repeat steps 1 – 3 in reverse order so as to close the platform and reinstall it in the rack.
10. Proceed to Chapter: [Installation and Connections](#)

## Unpacking the Axia® Quasar Engine RPS

The Quasar Engine RPS is a special version of the Axia Quasar Engine, which ships from the factory with an Engine RPS Board preinstalled.

### Physical Installation:

The Quasar Engine is designed to be installed in a climate-controlled environment where any noise generated from its fans will not be an issue, such as a machine room. Please refer to the Quasar Installation Guide for complete installation details.

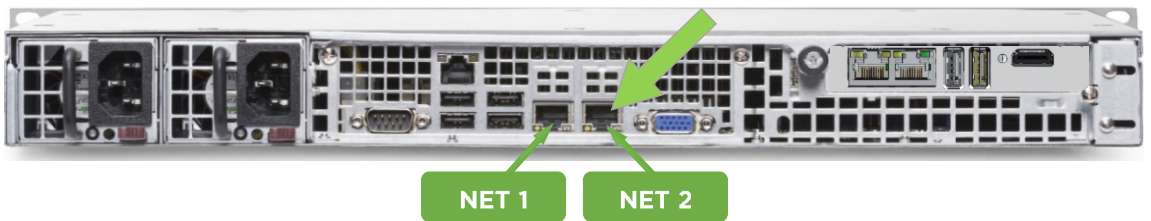


### Mains Power Connections:

Use the provided AC power cables to connect the Engine to grounded power receptacles. We suggest connecting each supply to different power sources for redundancy and highly recommend the use of a UPS (uninterruptable power supply) for each source.

### Audio Engine Network Connections:

Connect a network cable to the **NET 2** port (the right-most port when looking at the rear panel). Connect the other end of the cable to a Gigabit port of your AoIP network.



Quasar Engine ships with a default IP address of 192.168.2.100 and a Netmask of 255.255.255.0. This can be changed using the web GUI once the unit is connected to the network.

### Software:

Quasar Engine RPS requires your Quasar Surface to run SW v3.0 or greater, in case you want to use it as a backup “soft surface” for your Quasar console.

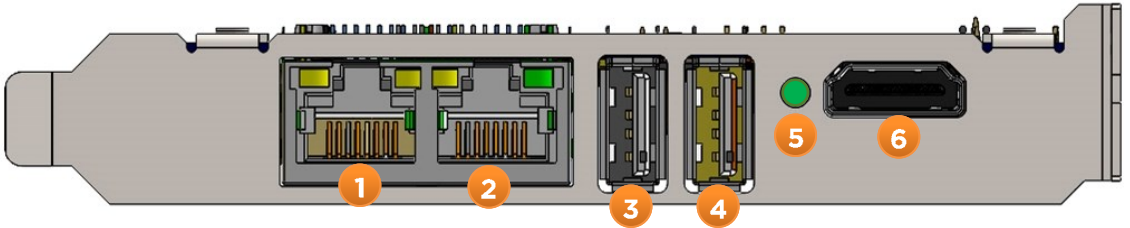
A Quasar Soft license is not included with the Upgrade Kits and must be purchased separately, in order to have full control of Quasar Engine RPS.

### Default IP Address:

This is 192-168.2.10/255.255.255.0

## Installation & Connections

The Quasar Engine RPS card behaves and connects like a Quasar Surface. Therefore, a total of two network cables must be connected from the Engine RPS platform to your AoIP switch: one from the Engine Network port, and one from the RPS card LAN port.



1. **WAN Port:** This port is disabled by default. Its IP address is set to 0.0.0.0 and can be changed from the Web GUI, reachable from the LAN Port. The use of this port is not required, if no remote control is required from a different network other than your Local AoIP network
2. **LAN Port:** This port is assigned by default to IP 192.168.2.10/255.255.255.0 and must be connected to a Gigabit port of your AoIP network.
3. **USB-A Port #1:** Quasar Fader Modules, such as the SR-4FAD module or one of the SmartKey modules (SK-6/12/18/24BTN) can be connected to this port. This port can also be used to connect to an external touchscreen monitor.
4. **USB-A Port #2:** Same as Port #1.
5. **STATUS LED:** This Status LED is normally ON and Green when the card is active and in working state. It can turn to Red in case an alarm is triggered by the internal watchdog. Please check the Web UI if the LED should become Red.
6. **HDMI Port:** Connect an external Display, or Touchscreen monitor to this port in case you need to control The Engine RPS GUI directly without using the built-in Quasar Soft Web interface.

### Earth Connection and Grounding

- The Quasar Engine RPS Board is grounded through the Engine platform chassis.
- The Quasar Engine RPS platform is grounded through its Mains AC cables.

The Quasar Engine RPS does not require a separate chassis ground connection.

### Setup & Operation

Quasar Engine RPS follows the same operation principles of a normal Quasar Console. Please refer to the Quasar User Manual for setting up and operating your Quasar Engine RPS.

## INFORMATION ABOUT YOUR NEW PRODUCT

### IMPORTANT!

Telos Alliance strongly suggests that you use an Uninterruptible Power Supply (UPS) with power line filtering to prevent damage to the unit during electrical storms and power surges. Please note that damage due to lightning is not covered under the product Warranty (refer to your User Manual for warranty information).

For more information on lightning protection please visit our website:  
<http://blogs.telosalliance.com/tech/surge-suppression-pointers>

This page intentionally blank

# Quick Links

---

**Subscribe to our Newsletter**

Weekly updates on all things broadcast via email

[TelosAlliance.com/newsletter](https://TelosAlliance.com/newsletter)

---

**Social Media**

Facebook: [/TelosAlliance](https://www.facebook.com/TelosAlliance)

Twitter: [@TelosAlliance](https://twitter.com/TelosAlliance)

LinkedIn: [/TelosAlliance](https://www.linkedin.com/company/TelosAlliance)

YouTube: [TelosAllianceTV](https://www.youtube.com/TelosAllianceTV)

---

**Product Catalog**

[TelosAlliance.com/catalog](https://TelosAlliance.com/catalog)

---

**24/7 Tech Support**

Radio: +1 (216) 622-0247

TV: +1 (717) 735-3611

Radio: [support@telosalliance.com](mailto:support@telosalliance.com)

TV: [support@linearacoustic.com](mailto:support@linearacoustic.com)



1241 Superior Ave. • Cleveland, Ohio, 44114, USA • +1.216.241.7225 • [TelosAlliance.com](https://TelosAlliance.com)

© 2024 Telos Alliance®. All Rights Reserved. C24/16115. P/N 1490-00248-001 Quasar Engine RPS Quick Start Guide