

# OMNIA<sup>®</sup> MPX NODE

## FM Multiplex / RDS over IP at data rates as low as 320kbps!

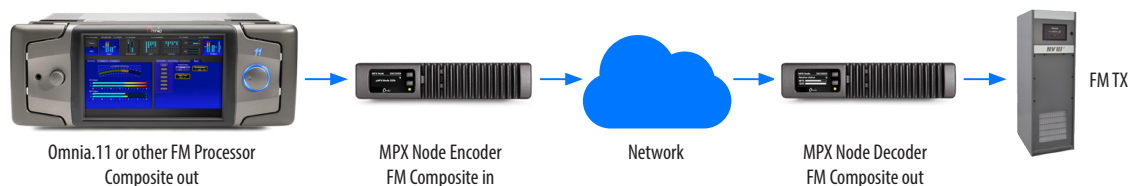


## OVERVIEW

The Telos Alliance<sup>®</sup> revolutionized the modern broadcast facility with the invention of Audio over IP. We proudly extend the AoIP revolution we began in the studio out to the transmitter with the Omnia MPX Node.

Like its namesake—the classic Axia<sup>®</sup> xNode<sup>™</sup>—Omnia MPX Node is a building-block technology that helps stations leverage the growing power and capability of data networking. The Omnia MPX Node is the first purpose-built hardware codec capable of sending or receiving full FM signals at data rates as low as 320 kbps utilizing the Omnia µMPX<sup>™</sup> algorithm, ideal for networks with limited capacity (including IP radios). MPX Node makes peak-controlled L/R baseband, stereo pilot, and RDS data routable from a studio to one or many FM transmitters.

By transporting an FM composite signal rather than left/right audio, broadcasters can keep their on-air processing and RDS encoding at the studio, then deliver a transmission-ready, peak controlled FM multiplex signal directly to an FM transmitter without the need for transmitter-side peak limiting or stereo generation. The MPX Node is available as either an encoder or decoder, and a pair of units creates an end-to-end system.



## Omnia MPX Node | FM MULTIPLEX / RDS OVER IP AT DATA RATES AS LOW AS 320KBPS!

### FEATURES

- MPX Node is available as either an Encoder or Decoder
- Omnia  $\mu$ MPX algorithm can transport FM composite (MPX) and RDS/RBDS at 320 kbps—perfect for IP radios and DSL IP circuits and other lower bandwidth connections
- Encoder can be fed by any brand of FM audio processor
- Omnia.9 or OmniaSST™ processing software can serve as the Encoder front end
- MPX Node Decoder outputs a standard analog MPX signal to feed any FM transmitter
- Full FM signals (including RDS/RBDS) can be sent over IP networks
- 5 In x 5 Out GPIO
- A single Encoder can transmit the same signal to multiple decoders
- Simple HTML.5-based web GUI allows you to control MPX Node from your desktop, tablet, or smartphone
- Cool-running, fanless operation
- Separate Ethernet ports for MoIP transport and web admin
- Dual bank firmware update design, for secure upgrading
- Half RU, xNode form factor
- Integrated test signal generator
- FM tilt correction

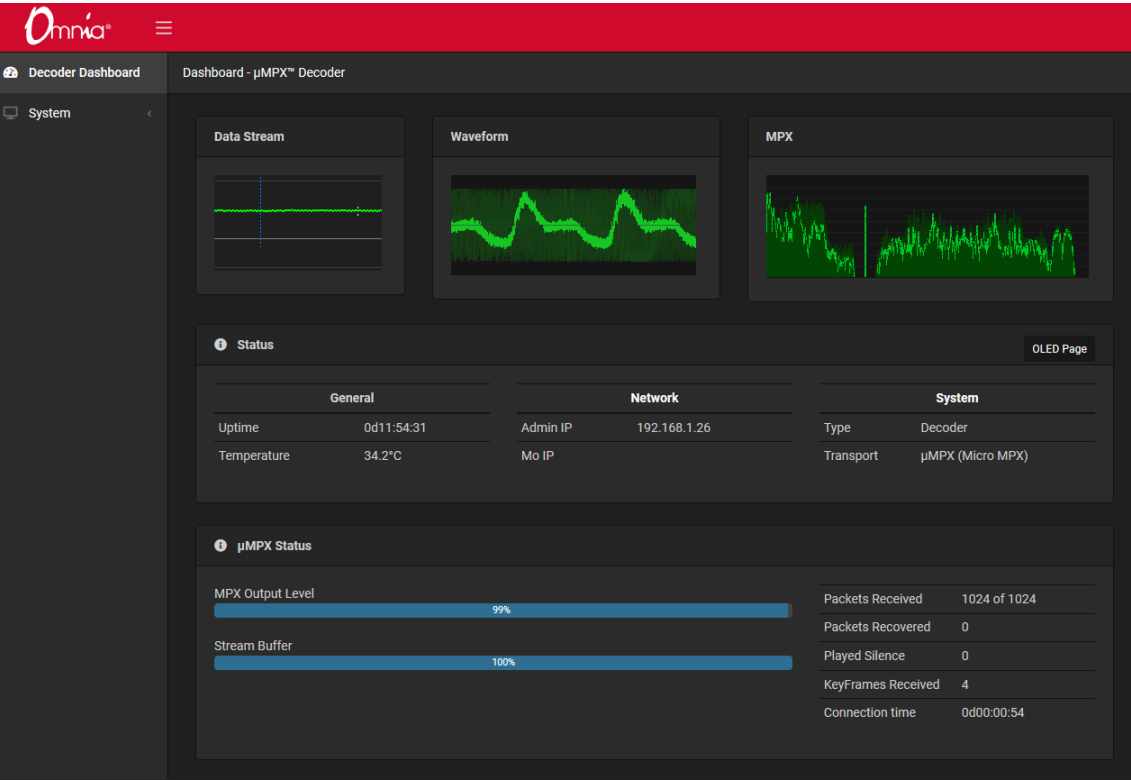
# Omnia MPX Node | FM MULTIPLEX / RDS OVER IP AT DATA RATES AS LOW AS 320KBPS!

## IN DEPTH

### Advanced GUI

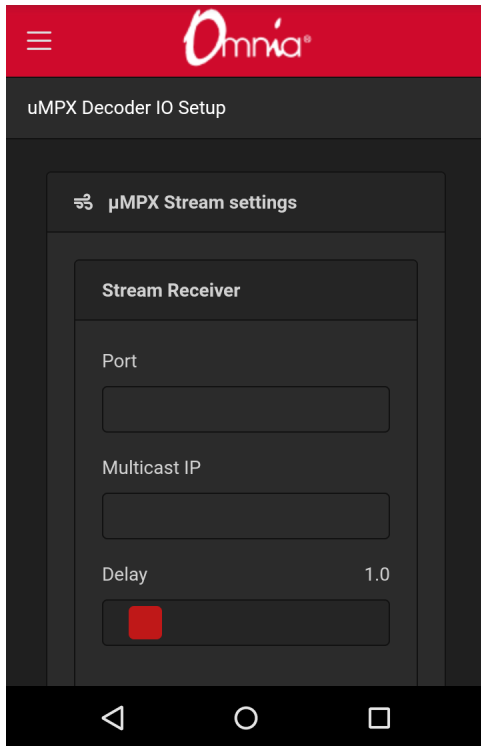
The Omnia MPX Node's HTML5-based GUI provides powerful, scalable, and secure control of the unit on all modern browser devices, from laptops to tablets to smartphones. Continuously updated displays provide real-time metering and instant status of all parameters and settings.

### PC Browser Control



## Omnia MPX Node | FM MULTIPLEX / RDS OVER IP AT DATA RATES AS LOW AS 320KBPS!

### Scaleable Control on a Smartphone Display

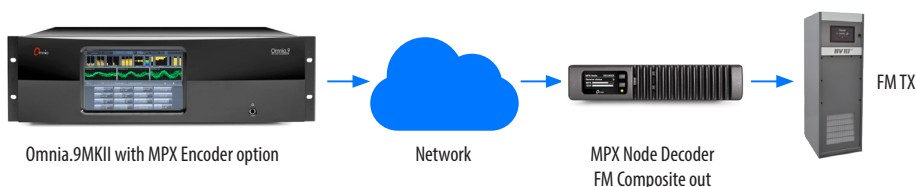


## APPLICATIONS

### Your Processor Is the STL

Imagine if your FM processor was also the front end of your transmission link. With an Omnia.9 at the studio, a stable IP link, and an MPX Node Decoder, you have a complete STL!

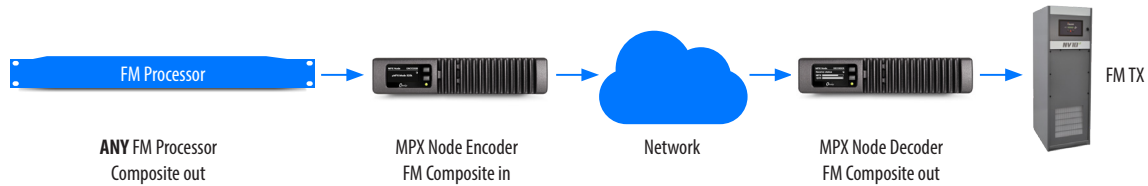
In this scenario, your Omnia.9 FM processor (with μMPX license installed) can be located at the studio. With IP addresses correctly set, Omnia.9 routes MPX/RDS data to one or many Omnia MPX Node Decoder(s) at one or more transmitter sites. The MPX Node (Decoder) then feeds your FM transmitter with a standard analog MPX signal. The Omnia MPX Node preserves all the complex peak limiting, stereo generation, and RDS (if provided), as if your FM processor were at the transmitter. The result is less equipment, fewer steps, and fewer points of failure between your processed signal and your transmitter.



## Omnia MPX Node | FM MULTIPLEX / RDS OVER IP AT DATA RATES AS LOW AS 320KBPS!

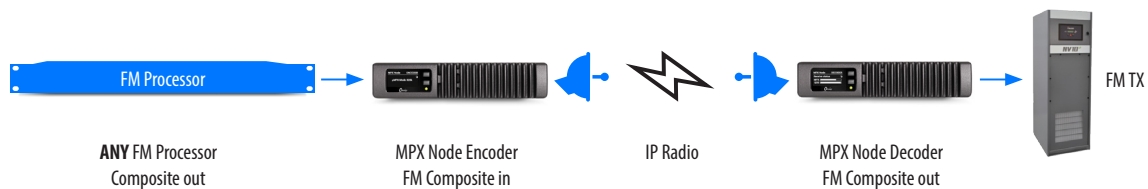
### Works with Any Audio Processor

If you don't have an Omnia.9, no worries. A pair of MPX Nodes is all you need to transport the MPX signal from your FM processor to your transmitter. MPX Node works with any FM processor with a stereo generator to transport a composite (MPX) signal over IP.



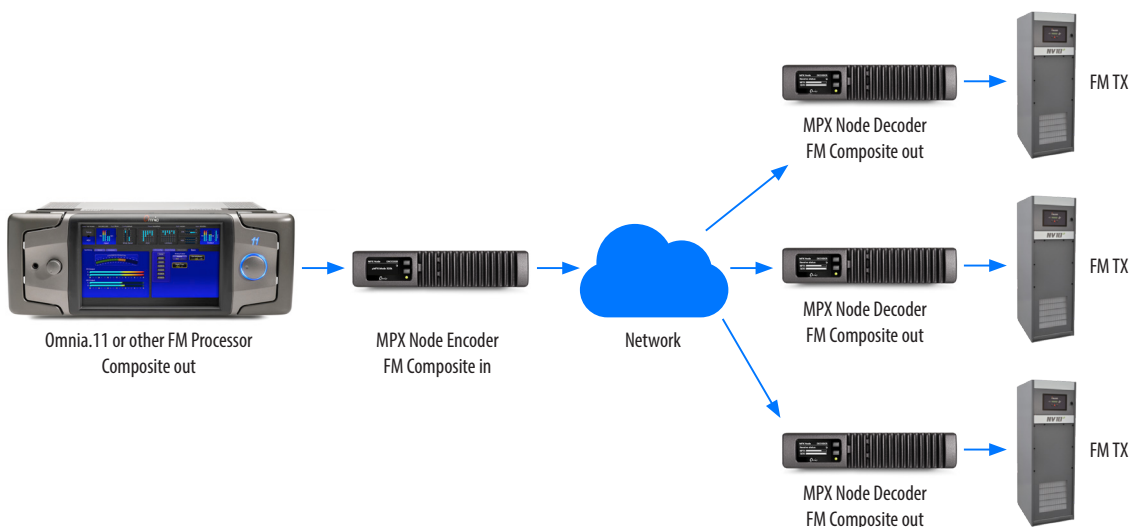
### Backup STL or Translator Link

The Omnia MPX Node makes a perfect backup link to your main studio or translator. With  $\mu$ MPX, lower bandwidth connections, such as IP radios can be employed to get a composite signal from studio to transmitter, without the need for further peak control or stereo generation on the transmitter end.



### Multi-Frequency Networks or Multiple Sites

With UDP distribution, a single encoder can feed multiple decoders. Your FM signal can be routed point to multipoint over different IP connection types and carriers



Omia MPX Node | **FM MULTIPLEX / RDS OVER IP AT DATA RATES  
AS LOW AS 320KBPS!**

## SPECIFICATIONS

- Analog composite FM in/out on (BNC connector)
- Composite connector impedance 5 or 75 ohm (switch selectable)
- 10/100 Ethernet for web control and administration
- 10/100/1000 Ethernet for MoIP connections
- 5 in x 5 out GPIO on a DB15 connector
- 100-240 VAC input 50-60 Hz external power supply with 12VDC, 3.4A output on locking connector
- 8.5" (22 cm) wide; two may be mounted side-by-side in a standard 1RU rack space with accessory mounting kit; 1.72" (4.4 cm) height, 11.75" (30 cm) depth
- Operating temp range 0 to +40 degrees C, <90% humidity
- Shipping weight 7 lbs. (3.2 kg.)