



MT2000 Bitstream Analyzer

QUICK START GUIDE AND MENU TREE



MT2000 QUICK START GUIDE AND MENU TREE

(version 0.0.42 / package 0.0.17)

BASIC OPERATION:

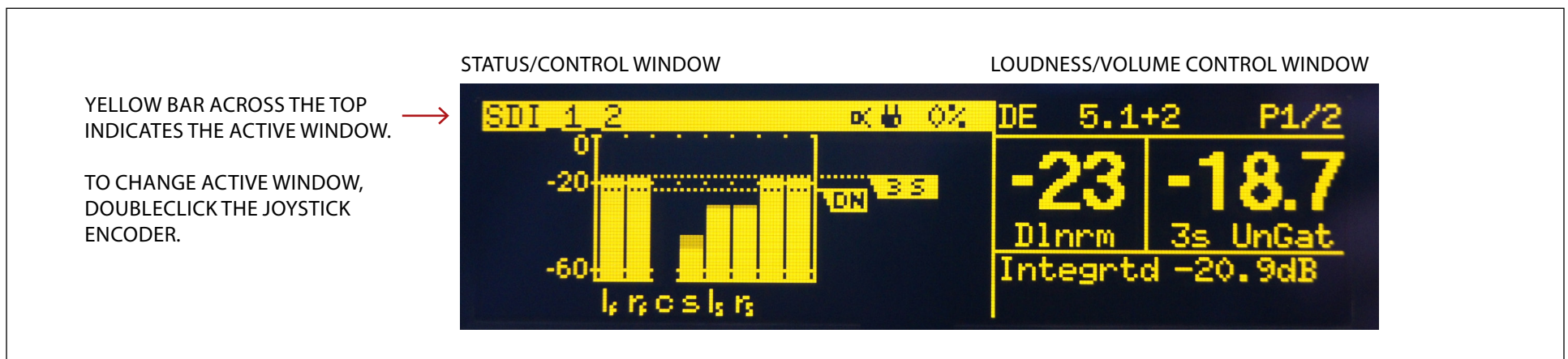
The front panel joystick/encoder can be turned (rotated), pressed in, as well as pushed up, down, left, right.

To power on/off the unit, press and hold the joystick in

The display is divided into two halves.

- Status/Control window on the left. All statuses, audio meters, and menus are displayed and adjusted.
- Loudness/Volume Control window on the right. Loudness measurements and envelope information about the audio source are displayed. The speaker/headphone volume control is functional in this window as well.

To change between the two windows, press the joystick/encoder in 2x quickly (double-click)



STATUS/CONTROL WINDOW:

To navigate through menus and displays, press the joystick/encoder:

UP or **DOWN** to move through a menu structure „vertically“

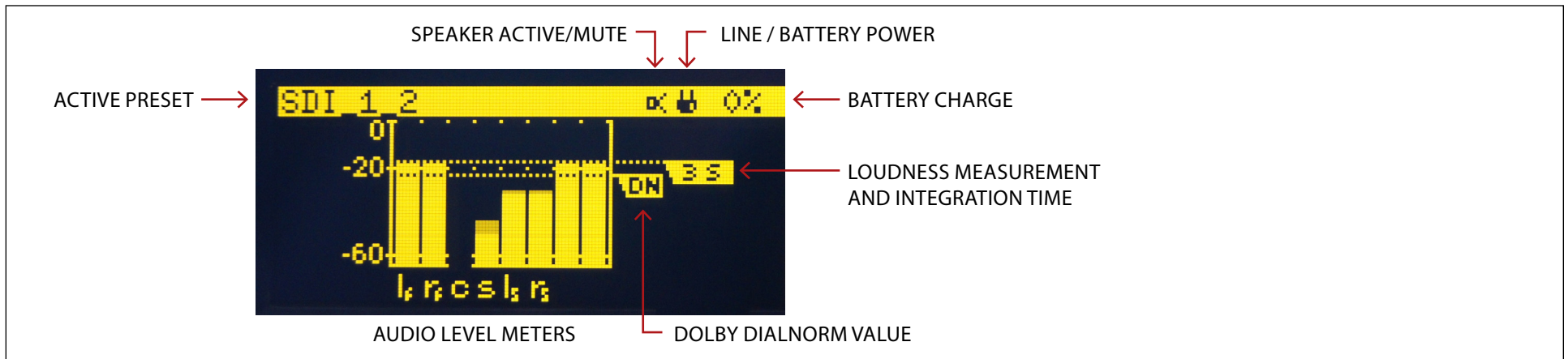
RIGHT to:

- move to the next menu option to the right.
- Accept the change in a parameter value (change from current value is indicated by a * character to the left of the parameter name)

LEFT to “escape”/back out of submenus, or to circle left at the top menu.

① If you are ever feeling lost in the menus and want to get back to the top level menus, press the joystick to the left repeatedl

The Presets, Out/Meter Setup, and System menus and sub-menus are where all the parameters and inputs are adjusted. To adjust a parameter, turn the encoder to the value you want and then press it to the right to select (enter) the value

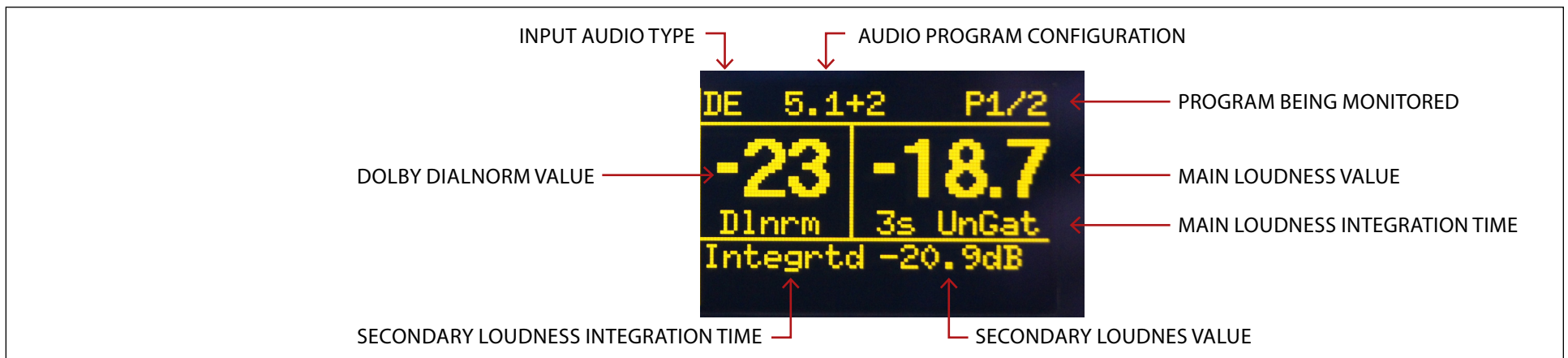


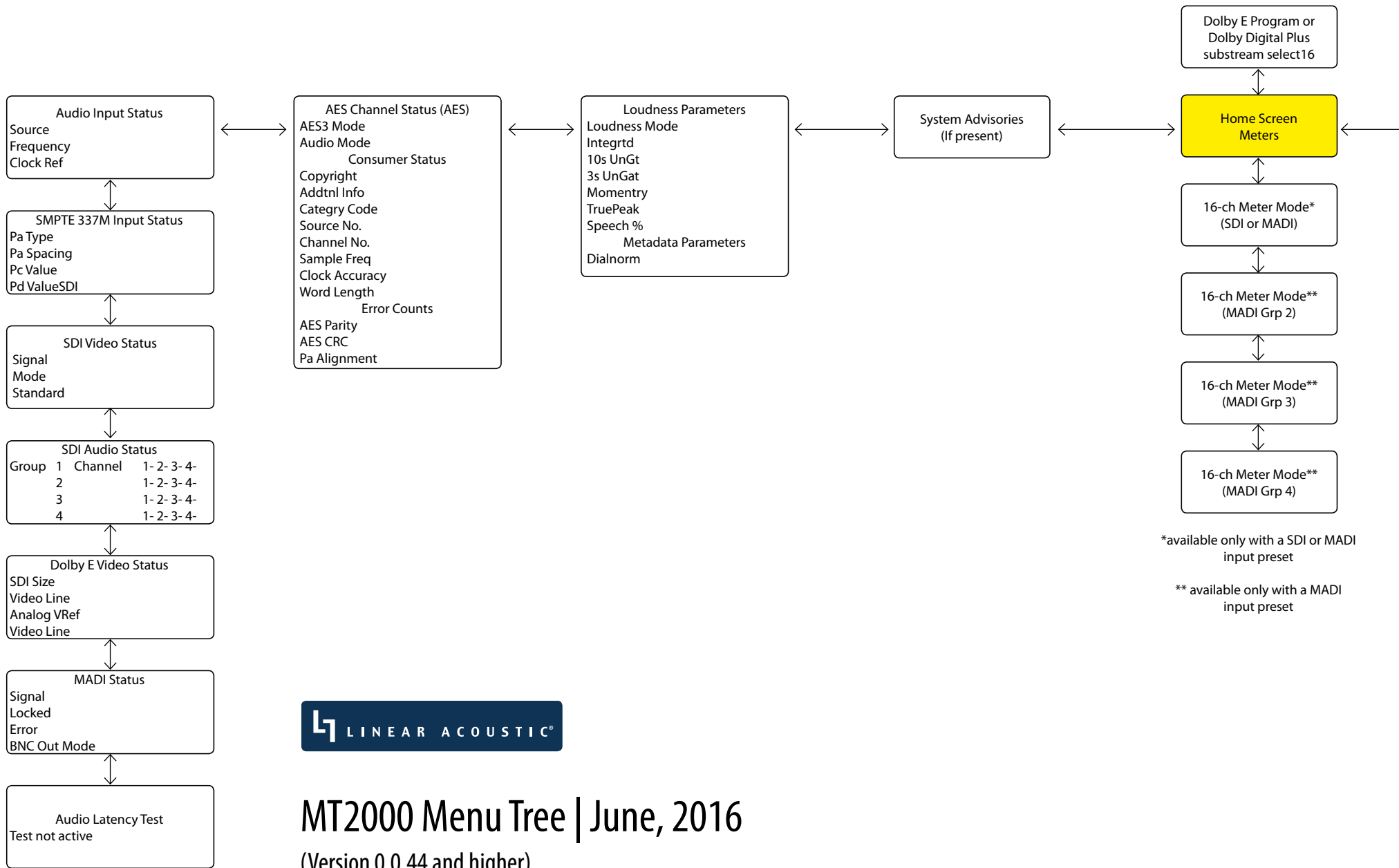
LOUDNESS/VOLUME CONTROL WINDOW:

Press the joystick/encoder:

- **UP** to reset the loudness measurements
- **DOWN** to mute or unmute the speaker/headphone outputs
- **LEFT** to solo the left channel of an audio pair
- **RIGHT** to solo the right channel of an audio pair

Rotate the encoder to adjust the listening volume





*available only with a SDI or MADI input preset

** available only with a MADI input preset

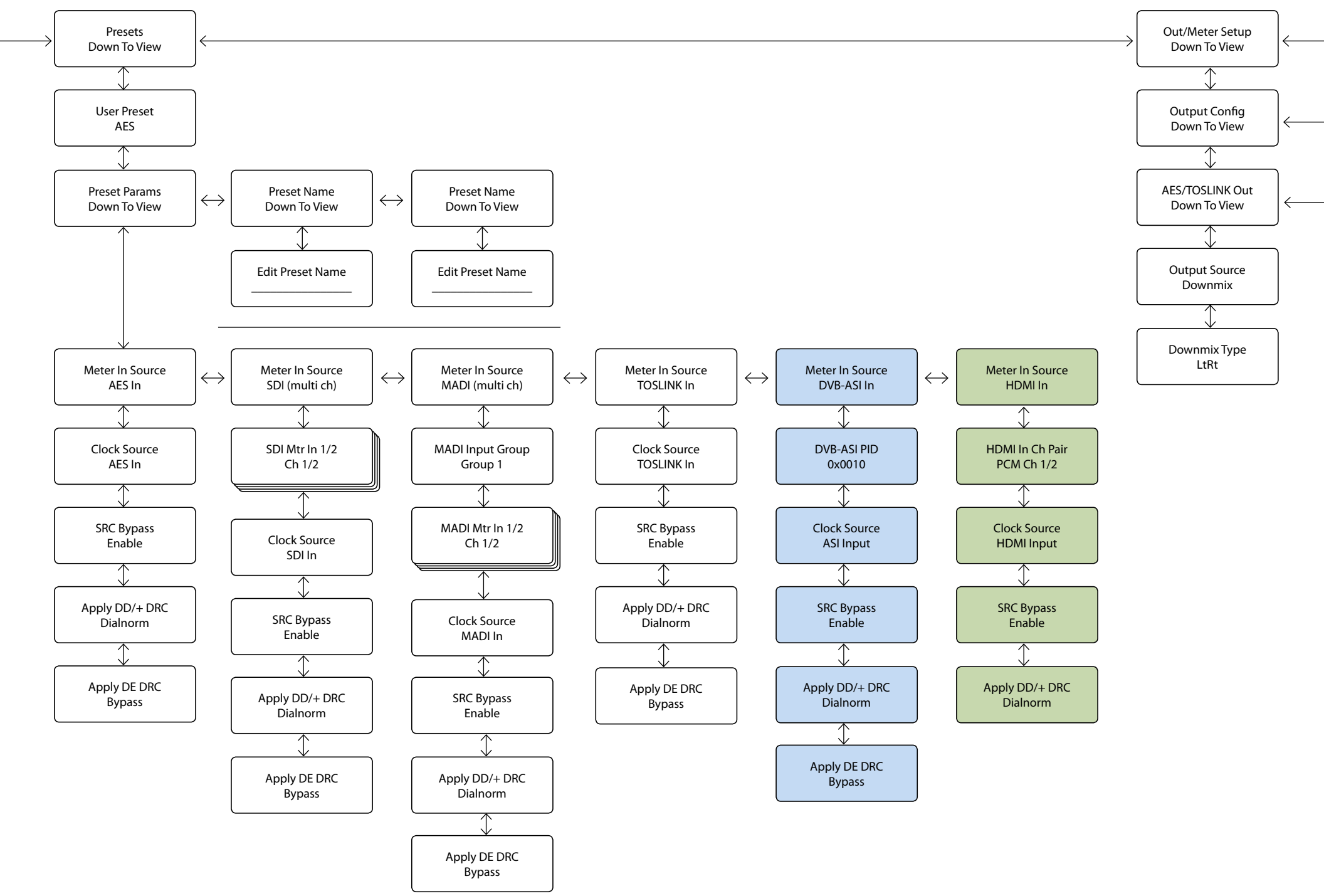


MT2000 Menu Tree | June, 2016

(Version 0.0.44 and higher)

LEGEND:





Presets
Down To View

User Preset
AES

Preset Params
Down To View

Meter In Source
AES In

Clock Source
AES In

SRC Bypass
Enable

Apply DD/+ DRC
Dialnorm

Apply DE DRC
Bypass

Preset Name
Down To View

Edit Preset Name

Meter In Source
SDI (multi ch)

SDI Mtr In 1/2
Ch 1/2

Clock Source
SDI In

SRC Bypass
Enable

Apply DD/+ DRC
Dialnorm

Apply DE DRC
Bypass

Preset Name
Down To View

Edit Preset Name

Meter In Source
MADI (multi ch)

MADI Input Group
Group 1

MADI Mtr In 1/2
Ch 1/2

Clock Source
MADI In

SRC Bypass
Enable

Apply DD/+ DRC
Dialnorm

Apply DE DRC
Bypass

Meter In Source
TOSLINK In

Clock Source
TOSLINK In

SRC Bypass
Enable

Apply DD/+ DRC
Dialnorm

Apply DE DRC
Bypass

Meter In Source
DVB-ASI In

DVB-ASI PID
0x0010

Clock Source
ASI Input

SRC Bypass
Enable

Apply DD/+ DRC
Dialnorm

Apply DE DRC
Bypass

Meter In Source
HDMI In

HDMI In Ch Pair
PCM Ch 1/2

Clock Source
HDMI Input

SRC Bypass
Enable

Apply DD/+ DRC
Dialnorm

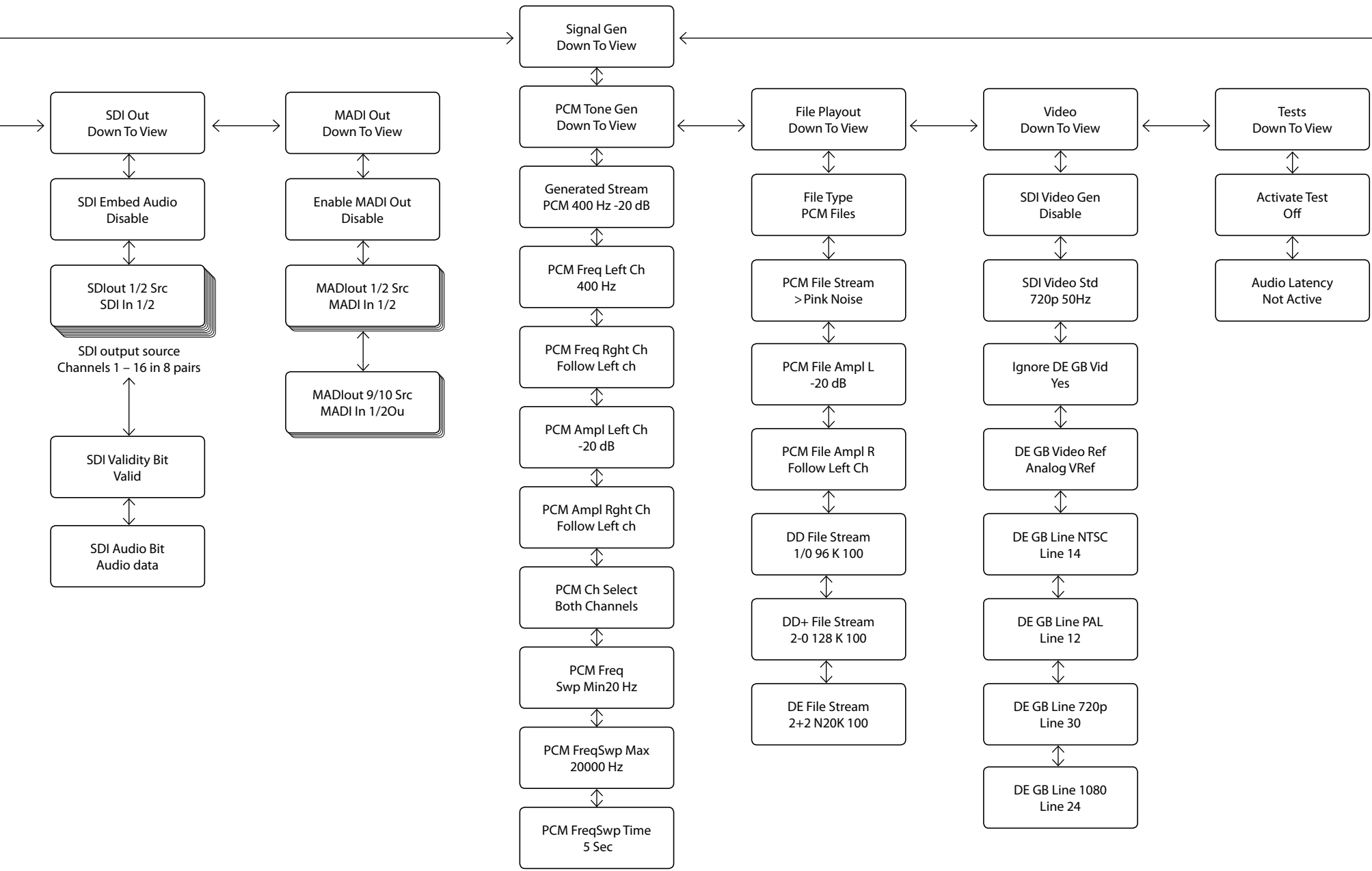
Out/Meter Setup
Down To View

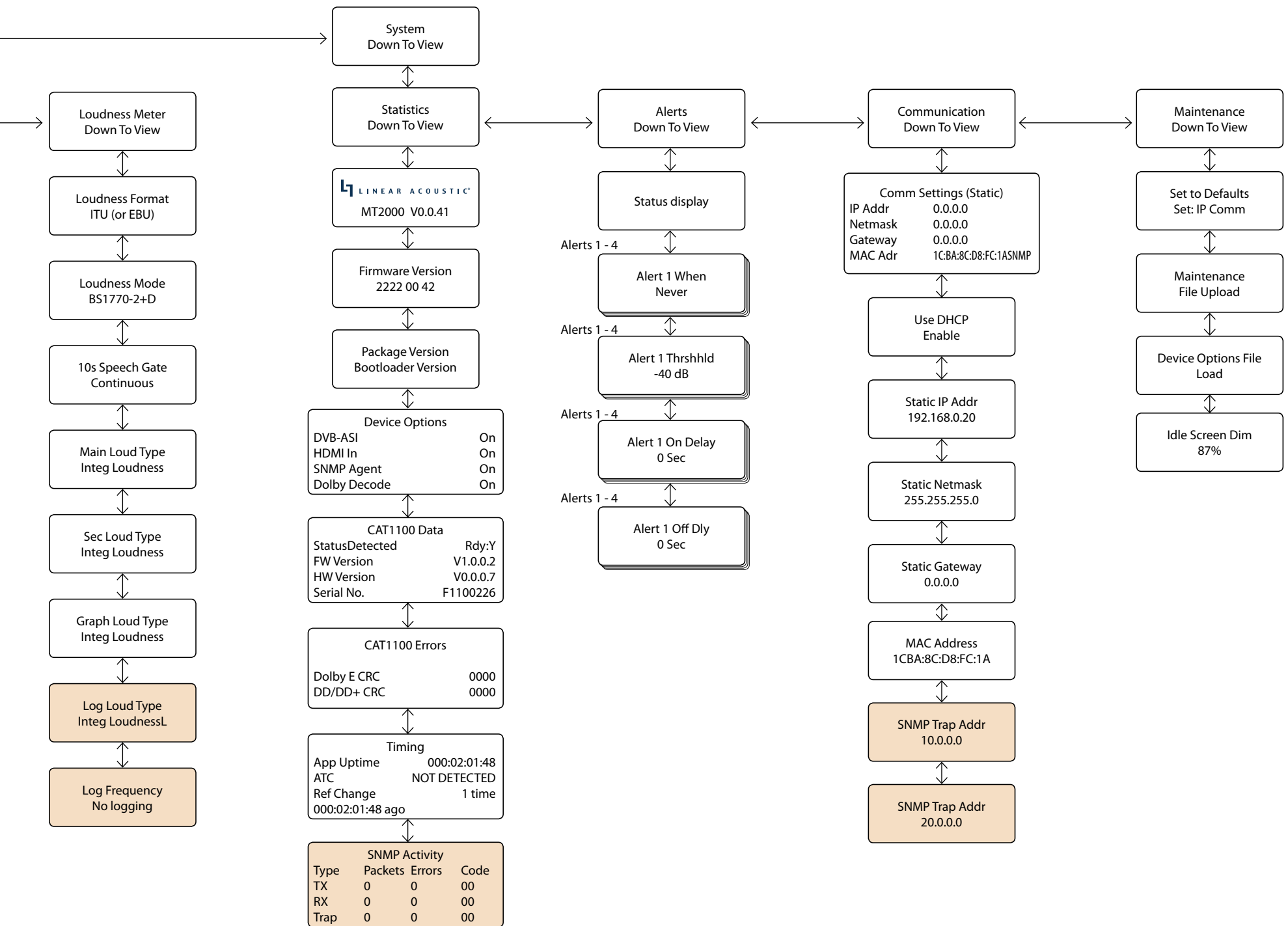
Output Config
Down To View

AES/TOSLINK Out
Down To View

Output Source
Downmix

Downmix Type
LtRt







A TLS Corp company

LINEAR ACOUSTIC®
108 Foxshire Drive | Lancaster PA 17601 USA
T 1.717.735.3611 | F 1.717.735.3612
LinearAcoustic.com