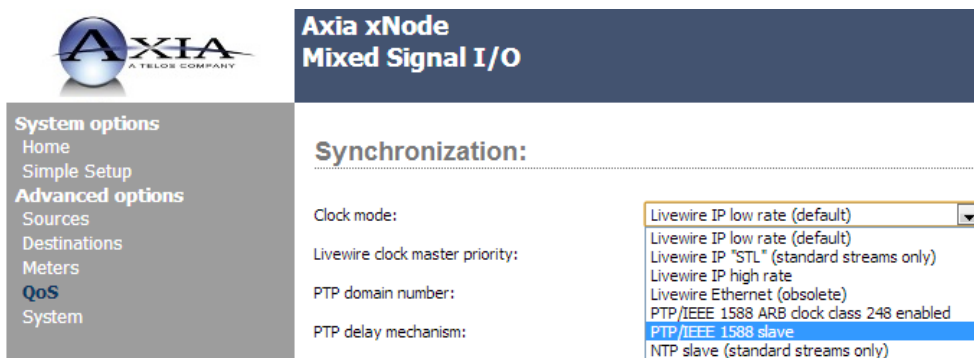


Tech Note: Setting xNodes for RAVENNA Operation

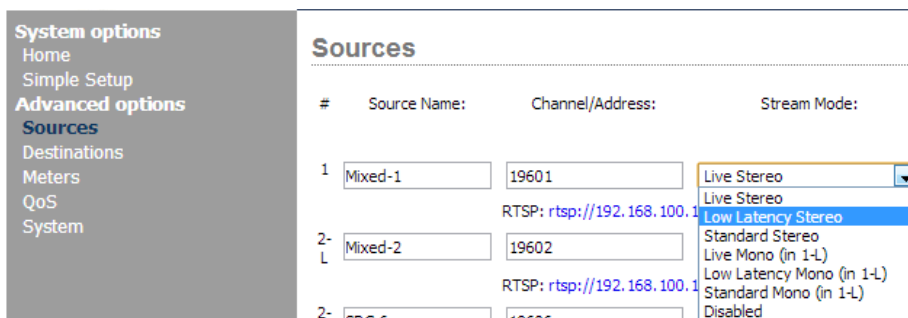
November, 2013

Please follow the steps outlined below in order to use an Axia xNode for use with a RAVENNA-compatible network.

1. Be sure that your xNode is running software v1.2.0m or higher. If it needs to be updated, please download the latest software package from www.AxiaAudio.com/downloads/.
2. Use your computer to log into the xNode's HTTP server menu. Select **QoS** from the **Advanced Options** menu.
3. Under **Synchronization**, set the xNode's Clock Mode to "PTP/IEEE 1588 slave". If you don't have a PTP source, then select the "PTP/IEEE 1588 ARB clock class 248 enabled" option.

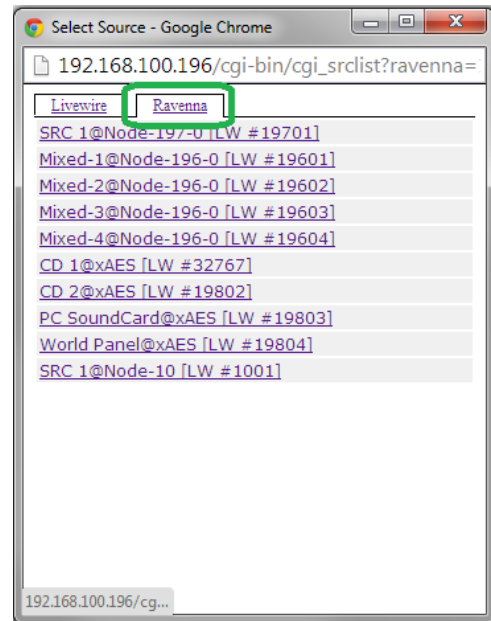


4. Some RAVENNA devices may not support Axia's Live Stereo mode. To prevent possible problems when defining sources in the **Advanced options > Sources** page, set the **Stream Mode** setting to the "Low Latency Stereo" option.



5. When operating in RAVENNA-compatible mode, xNode sources will be advertised automatically through Bonjour, and the RAVENNA device will be able to detect the them.

6. If you wish to load a source from a RAVENNA device using the **Advanced options > Destinations** menu option, the **Destination** link will provide a search button for each output. Selecting the search button will create a pop-up. By default, Livewire sources are shown, but you will also find a tab for Ravenna sources. Simply select this tab, then select your source stream from the list.



If you have questions or need further assistance, please contact Axia Support via email at support@AxiaAudio.com.