

# Controlling RCS/Prophet NexGen using Axia GPIO IP interface

Version: 0.9.1, 29 February 2008  
 By Maciej Szlapka, Axia Audio

This document describes how to configure GPIO remote control between Axia Consoles and RCS/Prophet NexGen. This configuration uses IP network and replaces need for hardware GPIO card in the PC as well as hardware wiring.

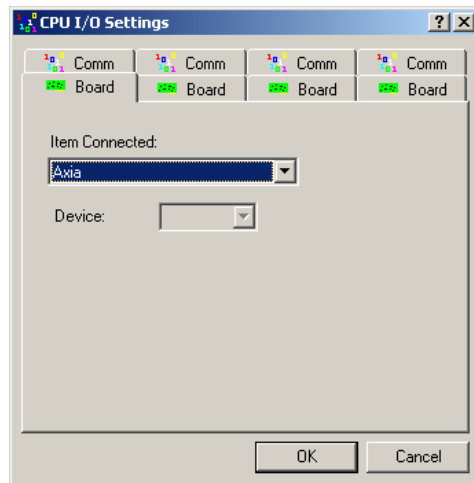
NexGen is aware of Axia GPIO interface and provides user-friendly configuration interface.

## Global CPU configuration

This configuration step enables the Axia GPIO module in NexGen.

Go to "Config" / "CPU" screen. Select CPU to configure and hit the "IO" button. On the "Board" tab, select Axia.

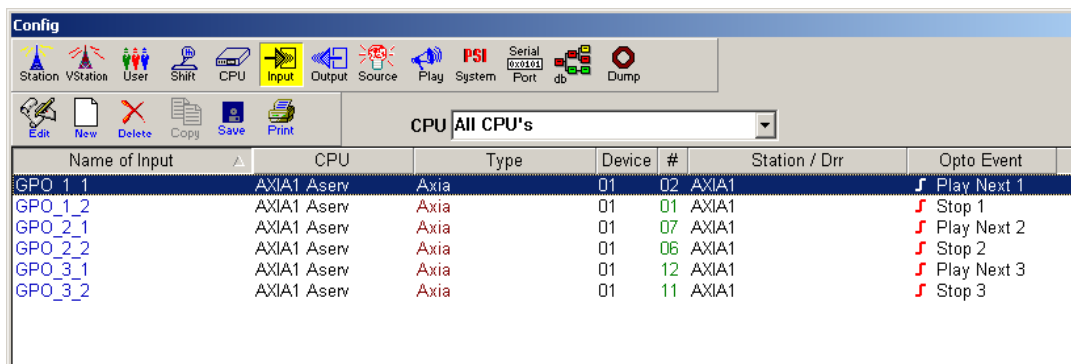
You may need to close NexGen at this point and start it again to make sure the new configuration is loaded.



## Configuring inputs

Input configuration enables control flow from Axia console to NexGen. This allows remote start and stop of selected playback machines as well as activation of other functions provided by NexGen.

On the "Config" / "CPU" screen select "Input". The screenshot below shows list of 6 defined events. Those events control "Control room" playback module.



Name of Input	CPU	Type	Device	#	Station / Drr	Opto Event
GPO_1_1	AXIA1 Aserv	Axia	01	02	AXIA1	Play Next 1
GPO_1_2	AXIA1 Aserv	Axia	01	01	AXIA1	Stop 1
GPO_2_1	AXIA1 Aserv	Axia	01	07	AXIA1	Play Next 2
GPO_2_2	AXIA1 Aserv	Axia	01	06	AXIA1	Stop 2
GPO_3_1	AXIA1 Aserv	Axia	01	12	AXIA1	Play Next 3
GPO_3_2	AXIA1 Aserv	Axia	01	11	AXIA1	Stop 3

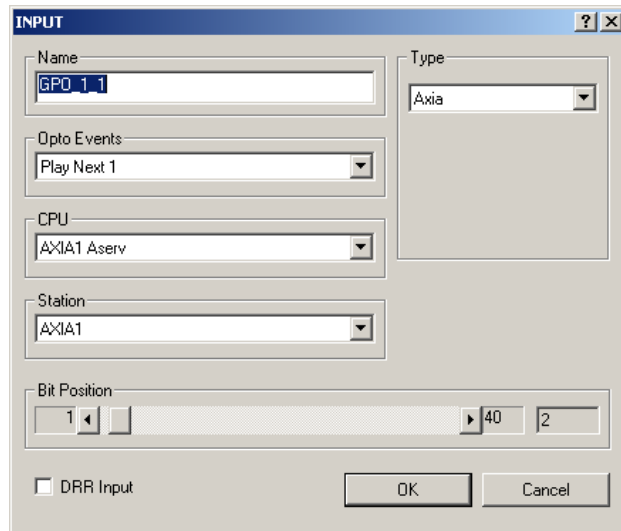
Use "New" button to create new event.

GPO\_1\_1 event corresponds to Axia Audio device 1, GPIO logic pin 1. It starts playback on machine 1. The detailed configuration of this event is the following:

Note pin numbering. Pins 1-5 correspond to livewire GPIO port 1 pins 1-5. Pins 6-10 correspond to Livewire port 2, etc.

You may need to close NexGen at this point and start it again to make sure the new configuration is loaded.

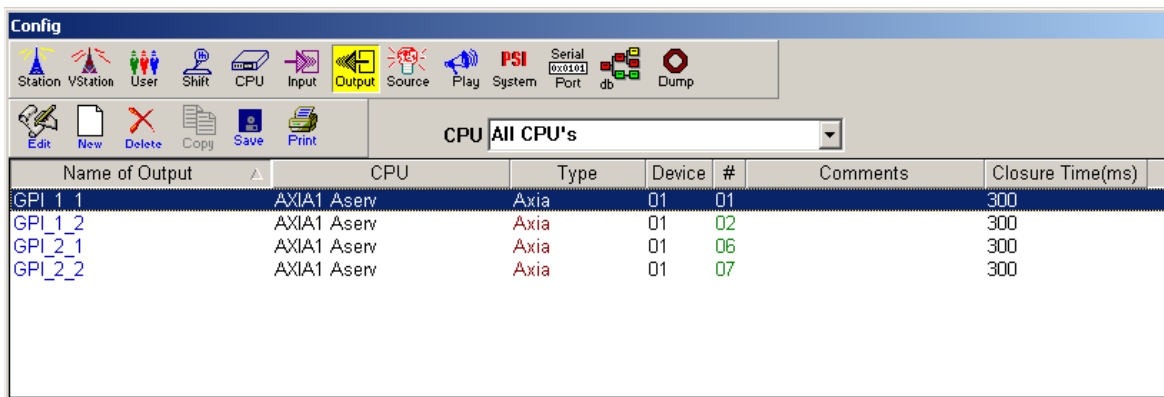
You should be able to start and stop playback on machines in control room module by pressing channel ON and OFF buttons on the console.



## Configuring outputs

Output configuration allows sending control messages from NexGen to the console. Such setup can be used to automatically turn on fader channels corresponding to current playback state of automation system.

On the "Config" / "CPU" screen select "Output". The screenshot below shows list of 6 events. Those events control "Control room" playback module.



To enable defined GPIs in selected station, use "Config" / "Station" screen. Open station window, hit "Relay" button to build a list of Relays (GPIs).

Using the “Config” / “Play” screen we change options of playback machines. Here, we can assign a selected relay to Start and Stop player events.

Close NexGen and start it again to make sure the new configuration is loaded.

Once NexGen is restarted, you will be able to control NexGen using Axia GPIO.

