

Configuring Windows Firewall for use with the Axia IP-Audio Driver

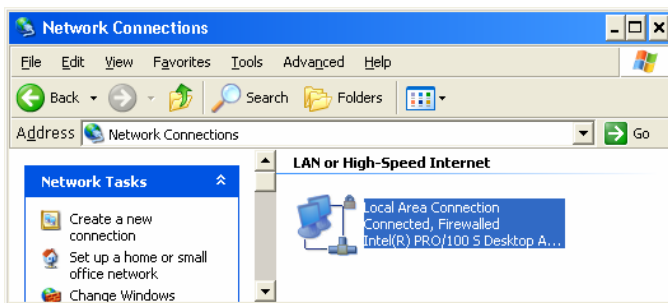
October 31, 2006

When installing the Axia IP-Audio Driver on PCs equipped with software firewalls, it will be necessary to manually configure firewall settings to allow UDP and TCP communications between the PC and the Axia network on specific local ports. Without these firewall rules in place, the IP-Audio Driver will appear to function normally, but will not be able to exchange audio with the Axia network.

This document outlines configuring Windows XP to work with the IP-Audio Driver. Although the screenshots and procedures shown will be specific to Windows Firewall, the port configuration information should be used to configure any software firewall running in the Windows environment.

There are many other different software firewalls available for Windows; too many for us to provide configuration information for. Please consult the documentation provided with your software to determine the proper way of adding ports, or call your software vendor's support line.

Step 1: Open the Network Connections window



Start the Windows Control Panel and double-click "Network Connections." A box similar to the one shown at right will appear onscreen.

There may be several network connections listed; choose the one that corresponds to the Network Interface Card you will be using to connect to the Axia network and *right-click* on its icon.

From the flyout menu that appears, choose "Properties."

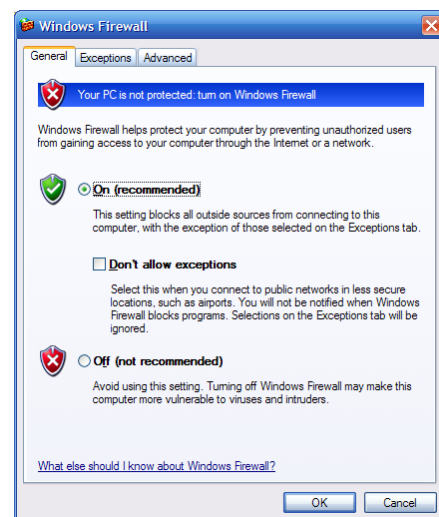
On the "Connection Properties" dialog box that appears, choose the "Advanced" tab and click the "Settings" button to enter the Windows Firewall configuration area.

Step 2: Enter the Windows Firewall configuration area

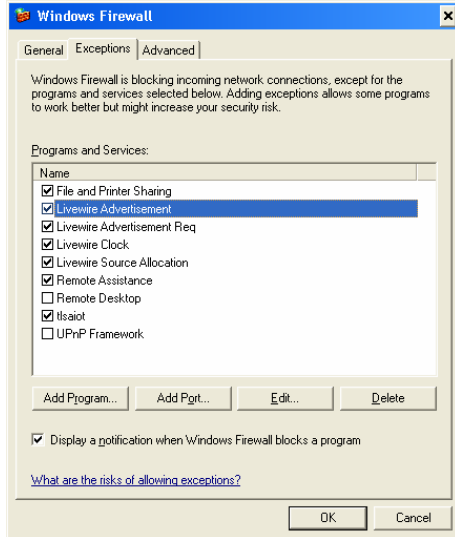
A box titled "Windows Firewall" will now appear. Examine the "General" tab. If your PC is using Windows Firewall, the "On" button will be selected.

Important: Before continuing, make sure that the "Don't Allow Exceptions" box is *not checked*. If there is a checkmark in this box, clear it before continuing.

(Note that if you are using a third-party software firewall



instead of Windows Firewall, the “Off” button should be selected here. If two firewalls are running, problems may occur.)



Now choose the “Exceptions” tab. By default, Windows Firewall blocks all non-standard communication ports not specifically added to the displayed list.

Here is a list of the ports we will be adding to the Windows Firewall Exception list, their names and protocols:

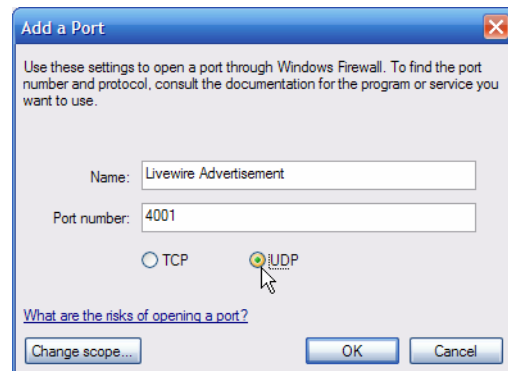
- Livewire Advertisement, Port 4001, UDP
- Livewire Advertisement Req, Port 4000, UDP
- Livewire Clock, Port 7000, UDP
- Livewire Source Allocation, Port 2060, UDP
- Livewire Audio Streams, Port 5004, UDP
- Livewire Routing Protocol, Port 93, TCP

We will need to add each one of these “firewall exceptions” individually, with the names and port numbers as shown above.

Step 3: Adding Firewall Exceptions

Click on the “Add Port” button near the bottom of the tab. The “Add a Port” dialogue opens.

1. Type “Livewire Advertisement” into the “Name” box.
2. In the “Port Number” box, type “4001.”
3. Click the “UDP” radio button.
4. Click “OK.”



You’ll see that “Livewire Advertisement” was added to the Firewall Exceptions list. Repeat the operation with the four other items listed above, and click “OK” when finished.

Your Axia IP-Audio Driver will now correctly exchange audio with the Livewire network.

Should you need assistance with your IP-Audio Driver, you can contact us via telephone (+1-216-241-7225) and/or e-mail (support@AxiaAudio.com).