

Axia IP-Driver version 2.11.0.10

12 Dec 2018, Cleveland, Ohio USA

Preparation for Update

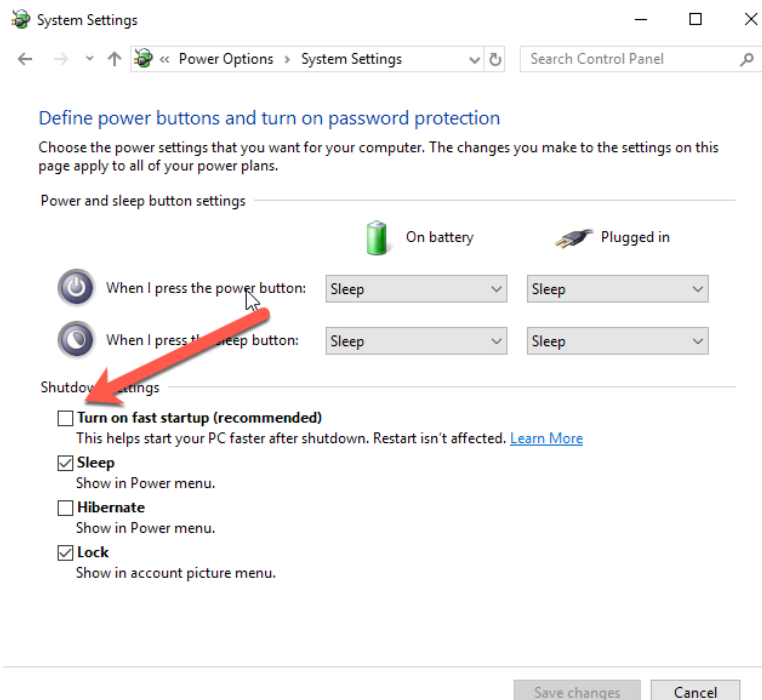
** Note for users of Windows 10**

We suggest that you disable Fast Startup in Windows 10 before installing this version to prevent possible "blue screen of death" (BSOD) issues that relate to the saving of kernel, drivers, and system states. Even by Microsoft's admission Fast Startup is enabled by default in a clean Windows installation on most laptops and desktops, but it doesn't always work correctly.

For this reason we recommend turning this off. To do this use the following steps:

1. Search for and open "Power options" in the Start Menu.
2. Click "Choose what the power buttons do" on the left side of the window.
3. Click "Change settings that are currently unavailable."
4. Under "Shutdown settings" make sure "Turn on fast startup" is **NOT** checked.

This screenshot shows Fast Startup properly DISABLED. You do not need to reboot after making this change.



Proceeding with your install

Before you begin, make sure you have your license and key available. Uninstall will remove this information.

Uninstall the previous version of the Axia IP-Driver before installing this version. After uninstalling, you must reboot before installing version 2.11.0.10.

For users of Windows 7, you must make sure your system is FULLY patched prior to install of this version. For other systems please review and apply any updates needed before you proceed.

Release notes

Version 2.11.0.10

- PTP items
 - Fixed bug creating PTP domain drop-down selections
 - Allow for setting PTP domain to 255
 - Added two-step PTP clock support
 - A new diagnostics data structure for PLL status
 - Outgoing RTP packets' timestamp synced to PTP time when clock set to PTP
- Resolved issues with NIC association
- Resolve issue with ASIO to allow 8-ch devices
- GPIO TTL value changed 128
- Removed debugging event log
- Rx buffers return correct num net-source bytes consumed
- Updated Livewire submodule
- WIN10 specific install removed; only 32/64 versions again
- Resolve source packet value