

Creating New CompactFLASH cards for Axia Element™ Modular Consoles

1 May, 2007

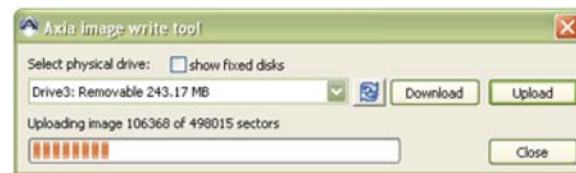
This document will walk you through creating a new CompactFLASH card for use with Element consoles.

Tools You'll Need

1. Card reader
2. Approved CompactFLASH card with suggested memory size of 256 Mb.
3. PC with AWRITE.EXE application (included in this package)
4. Element Image file ([contact Axia support](#) to obtain the latest file)
5. Backups of your SHOW, SOURCE, and CONFIGURATION profiles

Creating a New Card

1. Attach your card reader to the computer and insert your new CompactFLASH card into the reader.
2. Run the Axia `awrite.exe` application.
3. Select the drive that represents your CompactFLASH reader using the drop-down menu.
4. Select the Upload button and browse to the location of the Element image file. (The upload process can take several minutes, depending on the speed of your USB device).



Installing the New Card

Once completed, you will have a working CompactFLASH that can be inserted into your Element power supply.

1. Carefully remove all cable connections from the back of the Element power supply and remove it from its service location.
2. Place the chassis on a good work surface and remove the 12 screws from the top of the chassis.
3. Remove the power supply's top plate (taking note of which side is the front) and remove the old CompactFLASH card by carefully moving any it in an upward direction away from the chassis.

NOTE: forcing the card in a side motion will damage contact pins!



4. Carefully slide the new CompactFLASH card into place. Do not force the card, as this will cause damage. At the end of the insertion, a *little more* force will be needed to insure that the card seats and the pins insert into the socket.
5. Place the lid back on top and fasten the 12 screws; you're now ready to re-rack your unit.

Now, reconfigure the Element power supply with the correct IP address, and select which StudioEngine to link with. If you had SHOW and SOURCE profiles backed up, you can upload them once you reestablish communication (using the Maintenance section of the Element configuration web pages). In some cases you will also need to update the software of the power supply, since the most recent image file will not always be the same as the current released software version available for download on the web site.

If you have questions concerning this process, please contact Axia Support at support@AxiaAudio.com.